

**Massachusetts Emergency Management Agency
Region #2**

Radio Amateur Civil Emergency Services Team

WC1MAB



March/April 2017

Vol 2017 - Issue #2

This Month in Emergency Communications: Traffic Handling

Over the last few years the RACES/ACS nets in our part of The Commonwealth have steered definitively away from the handling of verbatim traffic messages. We have, instead, put a great deal of effort into preparing for the operational hindrances of infrastructure (repeater and power grid) failures. During the monthly test net in March, we encountered our first NTS style message in quite some time. While the end result was an overall success, the exercise definitely made apparent our rustiness and presented just about all operators involved with some excellent lessons learned.

I received feedback from multiple operators regarding ways in which we can improve. Some important take home points included the following:

- If NTS (verbatim) style messages are anticipated during the net, it should be announced during the pre-amble to allow operators to obtain necessary note taking items.
- Messages should be read at COPYING speed first and then at RECORDING speed.
- Proper use of X-Ray vs Break in a message
- Proper method of using the “check” count

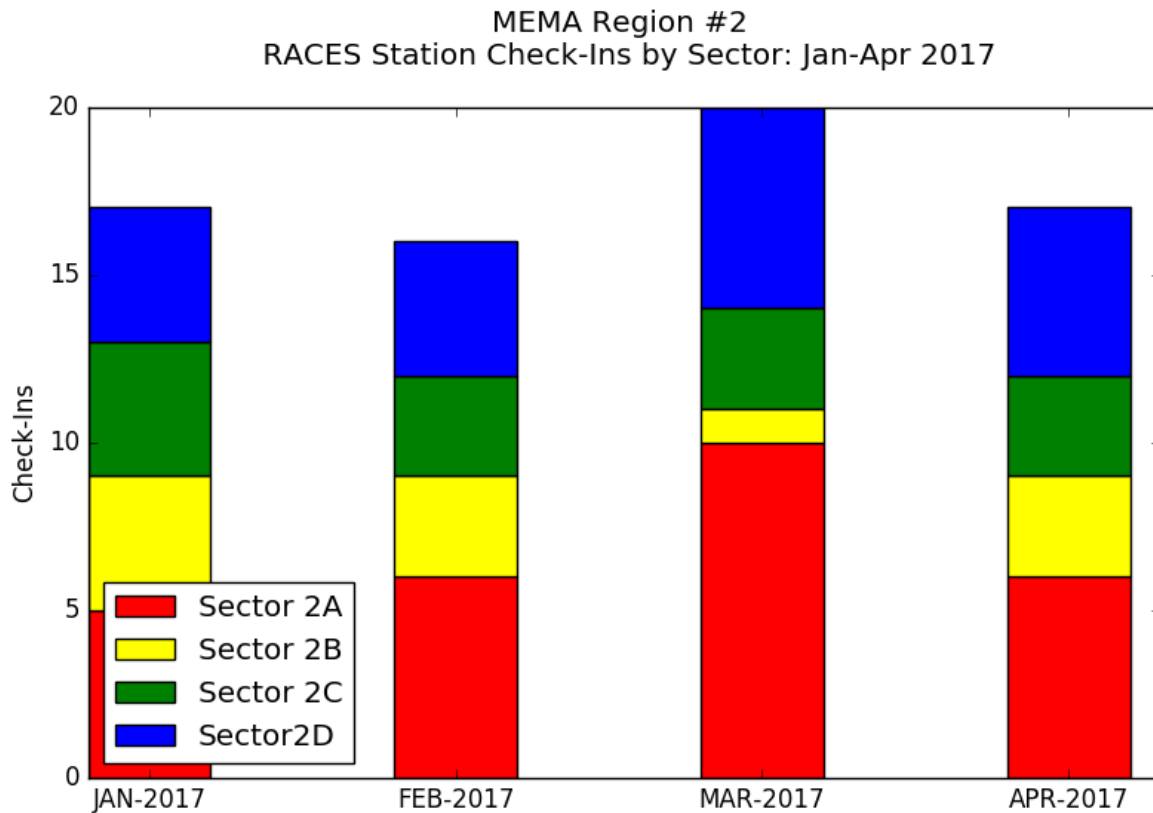
Many of these items are covered in the NTS Training Manual located on the ARRL Eastern MA Section website: <http://nts.ema.arrl.org/node/31> and I encourage all operators who participate regularly in our nets to review this page thoroughly as the ability to pass verbatim traffic between emergency managers is an important staple in the communications toolbox that we provide to our served agencies.

Monthly Net Report

The March and April communications test nights seemed to have typical check-in totals. I expect the warmer weather and longer days on the horizon may have a deleterious impact on our numbers, so getting as much equipment testing in now, before the start of hurricane season, is very important. For the nets, a total of **28 check-ins** were noted across the four sector nets in March and **27 check-ins** were noted in April. Many of our check-ins were RACES stations.

Three of the four nets were run with Net Control Operations being handled by Region 2 Headquarters operators (WC1MAB) and the Sector 2D net being handled by Jeff - N1JCM which is a normal operating configuration for the monthly nets.

Region 2 HQ once again did not participate in the monthly HF net due to the dipole antenna being out of service. The MEMA communications staff has been made aware of the issue and have been working on procuring a replacement antenna. During recent meetings this item has gained some visibility and is now a priority item with the Amateur Radio Comms teams.



March 5th, 2017 - Net Reports

Sector 2A

Net Control (Local):

WC1MAB/N1UMJ - John

RACES Stations

- 1.) Acushnet – WA1EMA (KA1RSY) Ed
- 2.) Attleboro – KB1YHF
- 3.) Dartmouth – KC1GTE
- 4.) Fairhaven – W1FEM
- 5.) Mansfield – KB1JJE
- 6.) New Bedford – N1IXC
- 7.) Norton - WC1NOR
- 8.) Rehobeth – W1KZA
- 9.) Taunton – N1EZH

Non-RACES / Non-Sector Stations

- 10.) Plymouth (Out of Sector RACES) – N1SYC

Sector 2B

Net Control (Local): KA1PS - George

RACES Stations

- 1.) Marshfield - KA1PS – George
- 2.) Plymouth – N1SYC
- 3.) MEMA Region 2 HQ – WC1MAB/N1UMJ

Non-RACES / Non-Sector Stations

None Reported

Sector 2C

Net Control (WC1MAB): N1UMJ - John

RACES Stations

- 1.) MEMA Region 2 HQ – WC1MAB
- 2.) Brewster – K1CKK
- 3.) Nantucket - N1MBQ
- 3.) Dukes County – KB1IHU

Non-RACES / Non-Sector Stations

None Reported

Sector 2D

Net Control (Local): N1JCM - Jeff

RACES Stations

- 1.) WJ1R - Dover
- 2.) K1DAT – Millis
- 3.) N1OIL - Milton
- 4.) K1FNX - Sharon
- 5.) N1JCM – Walpole
- 6.) WA1AR - Wrentham
- 7.) MEMA Region 2 HQ - WC1MAB

Non-RACES / Non-Sector Stations

- 1.) KB1OQA
- 2.) W1JKM – Wellesley
- 3.) W3EVE – Wrentham

April 3rd, 2017 - Net Reports

Sector 2A

Net Control (Local):

WC1MAB/WA1MZL - Steve

RACES Stations

- 1.) Dartmouth – KC1GTE
- 2.) Fairhaven – W1FEM
- 3.) Fall River – WA1MZL
- 4.) Freetown – K1PGS
- 5.) Mansfield – KB1JJE
- 6.) New Bedford – N1IXC
- 7.) Rehobeth - W1KZA

Non-RACES / Non-Sector Stations

- 8.) N1TZM – New Bedford

Sector 2B

Net Control (WC1MAB):

WC1MAB/N1MOJ - Jessica

RACES Stations

- 1.) Hanson - KB1MOC
- 2.) Marshfield - KA1PS
- 3.) Middleboro - KB1TEE
- 4.) MEMA Region 2 HQ – WC1MAB/N1MOJ
- 5.) South Shore Hospital - K1JAO

Non-RACES / Non-Sector Stations

None Reported

Sector 2C

Net Control (WC1MAB): N1UMJ - John

RACES Stations

- 1.) MEMA Region 2 HQ – WC1MAB
- 2.) Brewster – K1CKK
- 3.) Nantucket - N1MBQ
- 3.) Dukes County – KB1IHU

Non-RACES / Non-Sector Stations

- 4.) KD4OF - Plymouth
- 5.) KB1GTG – Bass River
- 6.) K1UI – Barnstable (Mobile)

Sector 2D

Net Control (Local): N1JCM - Jeff

RACES Stations

- 1.) WJ1R - Dover
- 2.) K1HRV – Millis
- 3.) K1FNX - Sharon
- 4.) N1JCM – Walpole
- 5.) WA1AR - Wrentham
- 6.) MEMA Region 2 HQ – WC1MAB/N1MOJ

Non-RACES / Non-Sector Stations

- 7.) KC1DOD - Foxboro
- 8.) KB1VXY - Hopkington